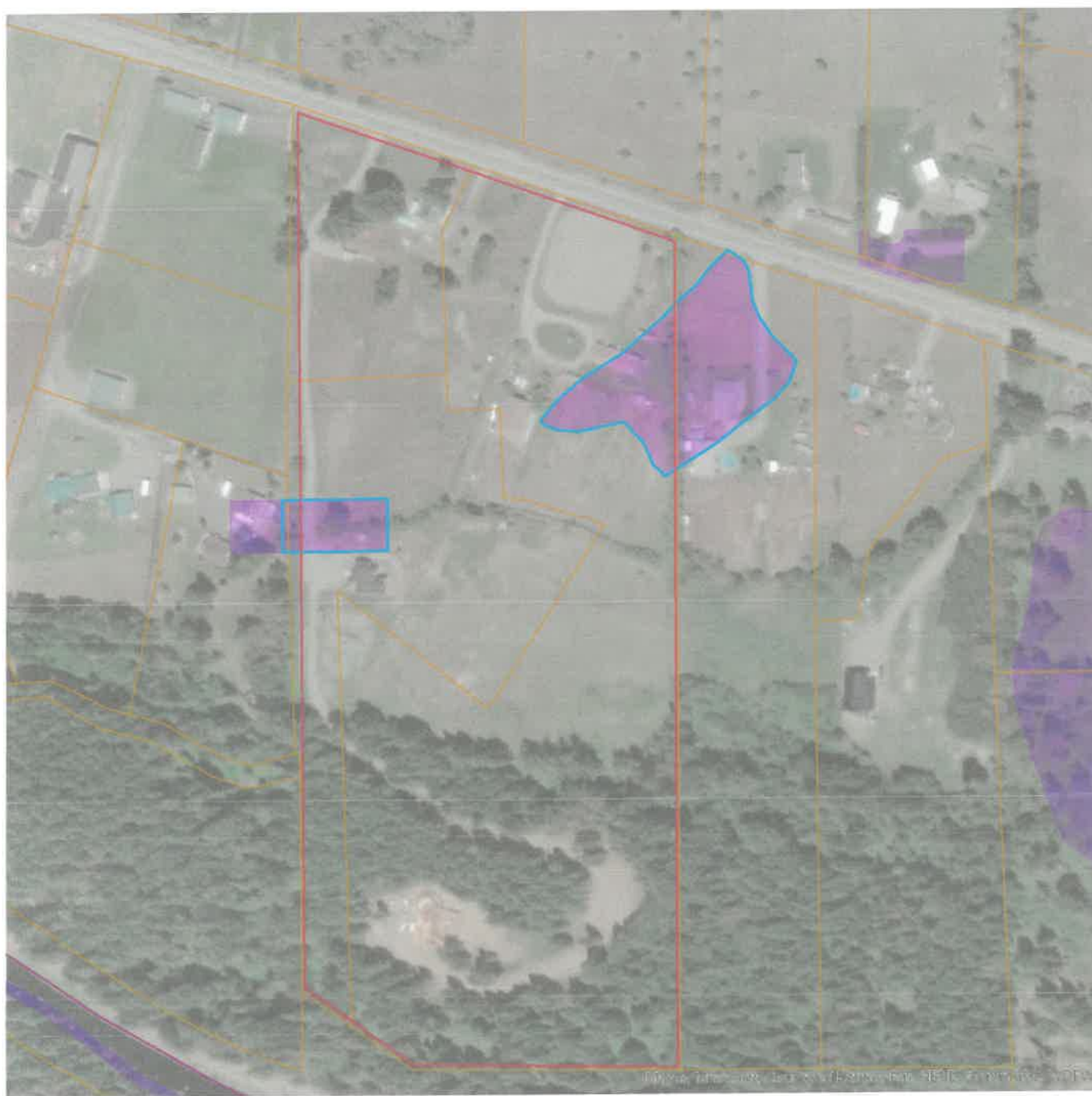


EXHIBIT 21

WASHINGTON STATE DEPARTMENT OF FISH AND WILDLIFE
PRIORITY HABITAT AND SPECIES PROPERTY REPORT



Priority Habitats and Species on the Web



Report Date: 06/04/2024

PHS Species/Habitats Overview:

Occurrence Name	Federal Status	State Status	Sensitive Location
Freshwater Emergent Wetland	N/A	N/A	No
Shrubsteppe	N/A	N/A	No
Little Brown Bat			Yes
myotis spp			Yes
Northern Spotted Owl	Threatened	Endangered	Yes
Yuma myotis			Yes

PHS Species/Habitats Details:

Freshwater Emergent Wetland	
Priority Area	Aquatic Habitat
Site Name	N/A
Accuracy	NA
Notes	Wetland System: Freshwater Emergent Wetland - NWI Code: PEM1C
Source Dataset	NWIIWetlands
Source Name	Not Given
Source Entity	US Fish and Wildlife Service
Federal Status	N/A
State Status	N/A
PHS Listing Status	PHS Listed Occurrence
Sensitive	N
SGCN	N
Display Resolution	AS MAPPED
ManagementRecommendations	http://www.ecy.wa.gov/programs/sea/wetlands/bas/index.html
Geometry Type	Polygons

Shrubsteppe	
Priority Area	Habitat Feature
Site Name	Kittitas County Presumptive Shrubsteppe
Accuracy	NA
Notes	General location of Shrubsteppe. Confirm or refute with site-scale info. WDFW recommends using site-scale info to inform site-scale land use decisions. Expect that on-the-ground conditions (e.g., boundaries) will vary from the map.
Source Record	920870
Source Name	Keith Folkerts, WDFW
Source Entity	WA Dept. of Fish and Wildlife
Federal Status	N/A
State Status	N/A
PHS Listing Status	PHS LISTED OCCURRENCE
Sensitive	N
SGCN	N
Display Resolution	AS MAPPED
Geometry Type	Polygons

Little Brown Bat	
Scientific Name	<i>Myotis lucifugus</i>
Notes	This polygon mask represents one or more records of the above species or habitat occurrence. Contact PHS Data Release at phsproducts@dfw.wa.gov for obtaining information about masked sensitive species and habitats.
PHS Listing Status	PHS Listed Occurrence
Sensitive	Y
Display Resolution	TOWNSHIP
ManagementRecommendations	http://wdfw.wa.gov/publications/pub.php?id=00605

myotis spp	
Scientific Name	<i>Myotis yumanensis/lucifugus</i>
Notes	This polygon mask represents one or more records of the above species or habitat occurrence. Contact PHS Data Release at phsproducts@dfw.wa.gov for obtaining information about masked sensitive species and habitats.
PHS Listing Status	PHS Listed Occurrence
Sensitive	Y
Display Resolution	TOWNSHIP

Northern Spotted Owl

Scientific Name	<i>Strix occidentalis</i>
Notes	This polygon mask represents one or more records of the above species or habitat occurrence. Contact PHS Data Release at phsproducts@dfw.wa.gov for obtaining information about masked sensitive species and habitats.
Federal Status	Threatened
State Status	Endangered
PHS Listing Status	PHS Listed Occurrence
Sensitive	Y
SGCN	Y
Display Resolution	TOWNSHIP
ManagementRecommendations	http://wdfw.wa.gov/publications/pub.php?id=00026

Yuma myotis

Scientific Name	<i>Myotis yumanensis</i>
Notes	This polygon mask represents one or more records of the above species or habitat occurrence. Contact PHS Data Release at phsproducts@dfw.wa.gov for obtaining information about masked sensitive species and habitats.
PHS Listing Status	PHS Listed Occurrence
Sensitive	Y
Display Resolution	TOWNSHIP
ManagementRecommendations	http://wdfw.wa.gov/publications/pub.php?id=00605

DISCLAIMER. This report includes information that the Washington Department of Fish and Wildlife (WDFW) maintains in a central computer database. It is not an attempt to provide you with an official agency response as to the impacts of your project on fish and wildlife. This information only documents the location of fish and wildlife resources to the best of our knowledge. It is not a complete inventory and it is important to note that fish and wildlife resources may occur in areas not currently known to WDFW biologists, or in areas for which comprehensive surveys have not been conducted. Site specific surveys are frequently necessary to rule out the presence of priority resources. Locations of fish and wildlife resources are subject to variation caused by disturbance, changes in season and weather, and other factors. WDFW does not recommend using reports more than six months old.